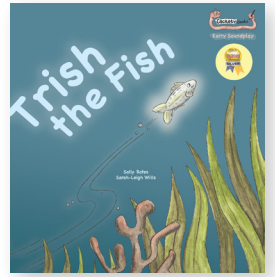


Rhyme time: Swish swish swish



Swish swish swish
I'm a little fish
I swim in water
Swish swish swish.

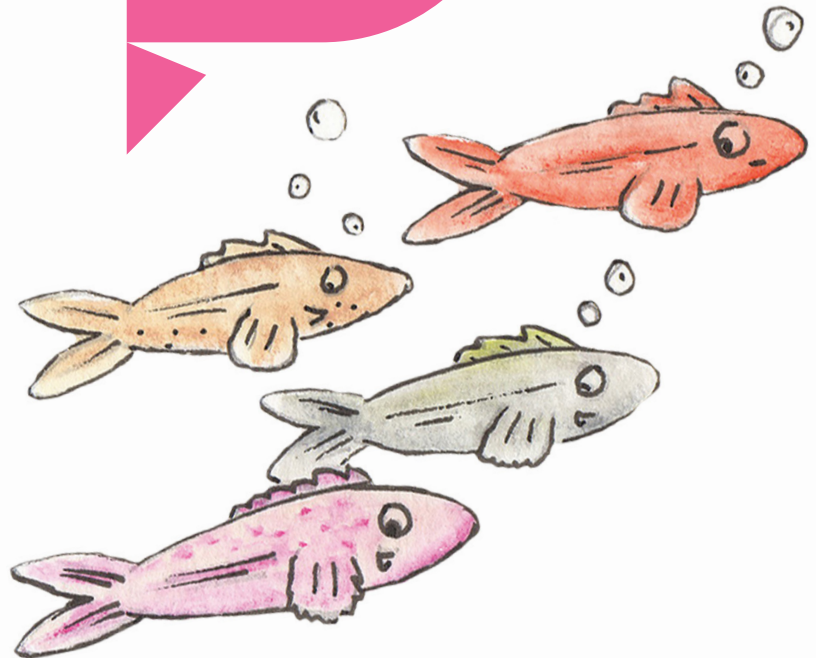
Swish swish swish
I'm a jellyfish
I swim in water
Swish swish swish.

Swish swish swish
I'm a big fish
I swim in water
Swish swish swish.

You can vary it by giving the fish a colour, for example:

Swish swish swish
I'm a blue fish
I swim in water
Swish swish swish.

You can use the finger puppets or lolly stick puppets to provide visual support for this rhyme



Encourage the children to move around like the sea creatures. Swish swish swish!